

April 2008

Colecciones Especiales: USF's Documentary Heritage of Tampa's Immigrant Communities

Tomaro I. Taylor

University of South Florida, tomaro@usf.edu

Follow this and additional works at: http://scholarcommons.usf.edu/tlas_pub



Part of the [Archival Science Commons](#)

Scholar Commons Citation

Taylor, Tomaro I., "Colecciones Especiales: USF's Documentary Heritage of Tampa's Immigrant Communities" (2008). *Academic Services Faculty and Staff Publications*. Paper 66.

http://scholarcommons.usf.edu/tlas_pub/66

This Presentation is brought to you for free and open access by the Tampa Library at Scholar Commons. It has been accepted for inclusion in Academic Services Faculty and Staff Publications by an authorized administrator of Scholar Commons. For more information, please contact scholarcommons@usf.edu.

Colecciones Especiales: USF's Documentary Heritage of Tampa's Immigrant Communities

Tomaro I. Taylor

Special Collections/ Latin American & Caribbean Studies

University of South Florida

Latin American Initiative Timeline

1982: Latin American Studies Faculty Committee established

1988: Creation of USF Latin Community Advisory Committee

1992: USF Planning Commission considers “internationalization as one of 6 broad areas of emphasis to shape USF strategic planning

1993: USF Latinos Association Advisory Body created

1994: USF Latinos Association founded

1995: Faculty forum to discuss Latin American and Caribbean initiatives

Latin American Initiative Timeline, cont.

1996: Five-year plan for Latin American Initiative devised; Committee for Cuban Studies formed as part of Latin American Initiative

1997: Latin American and Caribbean Studies department created

1999: USF Tampa Library Latin American & Caribbean Studies Librarian position established

2000: First Master of Arts degree in Latin American, Caribbean and Latino Studies established in state of Florida

Spring 2000: First Latin American & Caribbean Studies Librarian begins assignment at USF Tampa Library

Latin American and Caribbean Studies Collection Development Policies

USF Libraries

Statement of Purpose:

Develop and maintain collection supporting teaching, scholarly and research activities of students, staff and faculty and satisfying need for resources supporting undergraduate and graduate curriculum

Scope of Collection:

Monographic and serial collections

Languages: English, Spanish, Portuguese, French

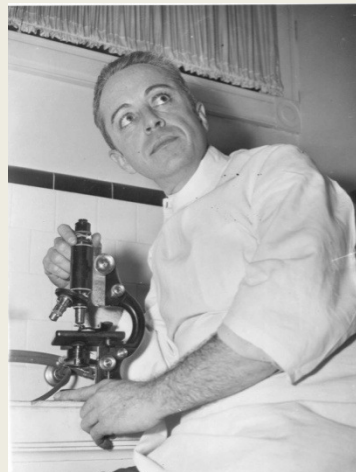
Geographic coverage: Mexico, Central America (Costa Rica, Belize), South America (Argentina, Brazil, Chile, Venezuela, Colombia), the Caribbean (Cuba)

Latin American and Caribbean Studies Collection Development Policies, cont.

USF Special Collections

<i>Statement of Purpose:</i>	Support USF Libraries mission through acquisition, collection, preservation, management and access to resources in areas where there is reasonable expectation of developing collections of excellence and distinction
<i>Scope of Collection:</i>	Monographic, serial and archival collections Languages: Spanish and English Geographic coverage: Tampa (FL), Cuba, Puerto Rico

Special Collections



Special Collections and the Ybor City Museum Society

What: Cooperative agreement affording access, use, and promotion of both institutions' available collections and resources

When: Ongoing

How: Establish Special Collections liaison to Ybor City Museum Society (YCMS)

Facilitate access to YCMS collections through student internships overseen by Special Collections liaison

Utilize Special Collections materials for exhibition at Ybor City Museum

Co-sponsor and co-market programs to expand program audience

**Questions? Comments?
More information?**

USF Tampa Library: <http://www.lib.usf.edu/>

USF Tampa Library Special Collections:

<http://www.lib.usf.edu/public/index.cfm?Pg=SpecialCollections>

USF Institute for the Study of Latin American and the Caribbean:

<http://web.usf.edu/iac/islac/>

Ybor City Museum Society: <http://www.ybormuseum.org>

Thank you